

Profile for the Benefice of St Margaret at Cliffe with Westcliffe, & The Langdons, as we invite applications to fill a 0.5FTE incumbent vacancy



Part of the Dover Deanery, in the Diocese of Canterbury, Kent

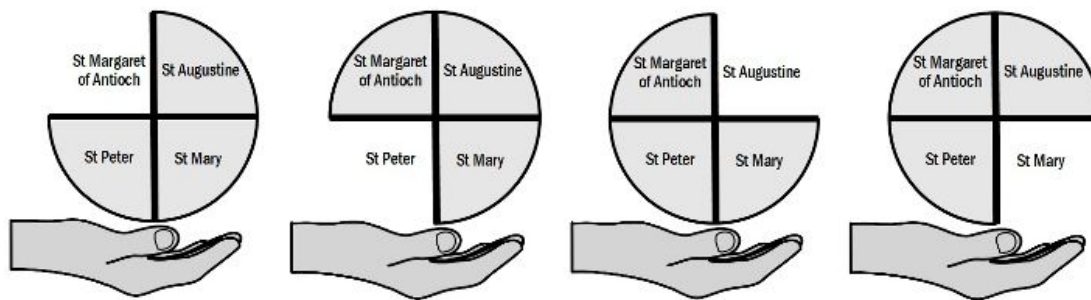
www.stmargaretsbenefice.org.uk
hello@stmargaretsbenefice.org.uk

CONTENTS

	Page
1. Let Us Introduce Ourselves.....	2
a) <i>Who are we?.....</i>	<i>2</i>
b) <i>What we can offer a new incumbent?.....</i>	<i>2</i>
2. What We Hope A New Incumbent Can Bring To Us.....	3
a) <i>Pastoral Leadership.....</i>	<i>3</i>
b) <i>Collaboration.....</i>	<i>3</i>
c) <i>Building on what has sustained faith.....</i>	<i>3</i>
d) <i>Visibility.....</i>	<i>3</i>
3 So, Do You Think This Could Be YOU?.....	4
a) <i>We are looking for someone with these qualities.....</i>	<i>4</i>
b) <i>We would be delighted if any of these also applied!.....</i>	<i>4</i>
4. Moving Forwards With Our New Incumbent.....	4
a) <i>Where do we sit within our communities?.....</i>	<i>4</i>
b) <i>Where do we want to go?.....</i>	<i>4</i>
c) <i>What can we build on?.....</i>	<i>4</i>
d) <i>Where are the current gaps?.....</i>	<i>4</i>
e) <i>What are our future needs likely to be?.....</i>	<i>4</i>
f) <i>How will we know we are making progress?.....</i>	<i>4</i>
5. About The Benefice.....	5
a) <i>Where are we?.....</i>	<i>5</i>
b) <i>As a whole.....</i>	<i>6</i>
c) <i>Historical context.....</i>	<i>7</i>
6. Broader Church Context.....	7
a) <i>Where the Benefice is placed within the Deanery / Diocese.....</i>	<i>7</i>
b) <i>Deanery structure & collaborative projects.....</i>	<i>7</i>
c) <i>Deanery Priorities & how St Margaret's Benefice fits in.....</i>	<i>7</i>
d) <i>Outline of current Benefice ministry team.....</i>	<i>7</i>
e) <i>Particular areas of interest of the Benefice.....</i>	<i>8</i>
7. About the Parishes.....	8
<i>St Margaret of Antioch.....</i>	<i>8</i>
<i>St Augustine.....</i>	<i>10</i>
<i>St Mary the Virgin.....</i>	<i>11</i>
<i>St Peter.....</i>	<i>12</i>
8. Appendix.....	14



1. Let us Introduce Ourselves...



a) Who are we?

- *Structure of the Benefice*

We are a rural Benefice with four beautiful churches steeped in history, showing some fantastic examples of Late Saxon / Early Norman architecture, wonderful windows, fascinating and moving memorials. The Benefice is three parishes who exist independently but in close fellowship and with active mutual support. This creates a strong, collective identity whilst retaining the clear personalities and traditions of each individual parish. Congregations come together when there is a fifth Sunday in the month at a joint service which rotates around all four churches. We recognised the challenges of maintaining governance in small parishes and have successfully united our Langdon parishes to ensure future sustainability.

- *How the three parishes work together and see their roles*

St Margaret's, with the largest population and largest church, is considered the 'Mother church' of the Benefice, and the Vicarage is situated here. Next largest is St Augustine's at East Langdon, with St Peter's and St Mary's being the hamlet churches at Westcliffe and West Langdon respectively. St Margaret's and St Augustine's are the churches that hold the most services in their respective halves of the Benefice, with St Peter's worshipping twice a month. St Mary's became a Festival Church earlier in 2023.



b) What we can offer a new incumbent?

- We offer a rewarding vacancy for a 0.5FTE post, in a beautiful part of the country.
- **Dedicated Church Wardens, PCCs and volunteers** committed to ensuring our churches are open and welcoming, and continue to function fully and effectively within their community.
- Collaborative, meaningful productive working between all three parishes via the **Benefice Focus Group**. An excellent **Benefice Administrator** for cross-parish administrative support and co-ordination, along with a Benefice-wide **Safeguarding Team**.
- **Welcoming congregations** familiar with a variety of worship forms, particularly at the larger churches where the more diverse populations require, and give the opportunity to provide, a wider service style, for example Holy Communion (BCP and CW), Family Services, Evensong and Services of the Word. In all churches there are competent musicians, and a robed choir in St Margaret's (the largest in the Deanery) who enhance the worship and support our Benefice services in the other churches.



- **A Home**

The Benefice is served by a well-appointed family house Vicarage in the centre of St Margaret's that has a separate office, front and back gardens and ample parking.



- **Early Years & Schools Engagement**

The St Margaret's Nursery has continuing links with St Margaret's Church via outreach volunteers for Bible stories, and coming in to church, with parents and carers to mark festivals. There are two primary schools in the Benefice, at St Margaret's and East Langdon (rated 'outstanding' and 'good' respectively by Ofsted) and a secondary school for students who have significant emotional, social and mental health needs at St Margaret's. Whilst none of these schools are officially 'church' schools, there have always been strong links with the local churches hosting significant festivals and events for them. As such, our young people have a great deal of familiarity and sense of belonging when in their local church setting which we hope endures throughout their lives.

- **Inspiring Worshipping Environment**

The historic nature of our flint-walled churches makes worship within them a particularly special experience. With two being Grade II* listed (St Augustine's and St Peter's) and one Grade I listed (St Margaret's), and buildings dating to the Early Norman period on Saxon foundations, there is very much a feeling of being part of something much greater than the here-and-now. Our churchyards are full of wildlife and beauty, and each church has its own distinct personality. We also take the initiative and expand our spiritual engagement and enrichment by way of a number of Home Bible Study Groups.

- You can find out so much more about our Benefice and its church communities by having a look at our website at www.stmargaretsbenefice.org.uk

2. What We Hope a New Incumbent Can Bring To Us

a) **Pastoral Leadership**

We are, of course, seeking someone who can take forward the spiritual life of our Benefice, encourage and guide our PCCs and be the leader of Christian life in our community, with a particular focus on pastoral care.

b) **Collaboration**

With the Benefice Focus Group as the fulcrum, beyond church, there is a very well-developed sense of community, with hard-working Parish Councils, thriving local organisations and numerous volunteer groups, all working together to build and sustain a place we all treasure and value. Many of the people involved wear 'multiple hats' so community life is very much a web of activity. The churches have long underpinned these communities and we see continued collaboration with these important social structures as essential to maintaining and building on our increasingly important outreach and pastoral care ministry. Successful collaboration will be the key to progress.

c) **Building on what has sustained faith**

Coming into a new Benefice will always be an exciting and challenging adventure. We welcome and encourage a fresh perspective on what nature and form our Christian life can take. Whilst we honour what has been before, we recognise that 'church' has always adapted to changing circumstances and we have to embrace the here-and-now so we are ready for the what-will-come.

d) **Visibility**

One of the things that is clear, is the importance of a 'visible dog-collar' within our communities, likened to the value people place on 'Bobbies on the Beat'. We recognise that, as we are advertising a 0.5FTE vacancy, we don't expect our vicar to be omnipresent, but we hope that a new incumbent can again be a familiar, welcome and trusted face of Christian life across our Benefice.



3. So, do you think this could be YOU?

To summarise:

a) We are looking for someone with these qualities

- Desire to be the leader of Christian life in the Benefice
- Energy and patience to listen, encourage, enable and innovate
- Empathy and deep sense of pastoral care
- Skills to work collaboratively to grow the spiritual life and Christ-informed actions of our parishes, both inside and outside the church setting
- Ability to lead and guide us into deeper discipleship with service and joy at its heart

b) We would be delighted if any of these also applied!

- Experience and understanding of the unique characteristics of rural parishes
- Skills and interest in working with younger generations and community groups
- An interest in the natural world

4. Moving Forwards With Our New Incumbent

a) Where do we sit within our communities?

These four churches have been here for centuries, and are held with a lot of affection.

b) Where do we want to go?

We want to encourage spiritual growth and confidence to build more day-to-day discipleship, searching out opportunities for living out God's love outside the boundaries of church worship. We want to support the Bishop, Diocese and Deanery. We want to do this with a sense of fun and joy.

c) What can we build on?

Our PCCs and church teams kept our churches in touch and functioning throughout Covid, and have a wealth of experience and local knowledge. They are the foundation on which we build and grow.

d) Where are the current gaps?

We are seeking pastoral and spiritual leadership and support. Our interregnum Ministry Team is exceptional but by its very definition it can only guide, not spearhead. We need to reimagine what 'being a church member' could mean for our latent congregation. Our older population continue to be the bedrock of all four congregations, but more 'community' services such as the Christmas Eve Cribside Service or Carols on the Green bring in a far wider demographic. There are families of all shapes and sizes out there – we need to offer meaning and relevance. We are confident that there is a very real latent level of potential connection with the parish churches in our Benefice – the challenge is to turn latency into activity!

e) What are our future needs likely to be?

Our key areas of concerns are the sustainable provision of pastoral care across the Benefice, as our populations age and needs increase; developing practical, imaginative outreach to engage our families and build their sense of worth within the church; the increasing toll of dementia, both in numbers who suffer and their carers; providing engaging worship that people want to be part of and are excited by. Our ancient buildings are important spiritually, historically and geographically and as custodians it is down to us to ensure they continue to be fit for purpose.

f) How will we know if we are making progress?

Church life will be a natural topic of conversation; we will see new faces at worship and events; the PCCs will continue to be encouraged in their work with new people willing to step into roles; our new incumbent will feel happy, settled and rewarded in their new life in the Benefice!



5. About the Benefice

a) *Where are we?*



- *Our geographical context*
We are a rural Benefice of 7.8 square miles on the South Kent coast, halfway between Dover and Deal, the churches set almost in a line with St Margaret's being closest to the sea, followed by Westcliffe, then East and West Langdon running inland. Surrounded by rolling farmland and Areas of Outstanding Natural Beauty, including the White Cliffs of Dover, we are truly blessed by our landscape and wildlife.
- *Outline socio-economic and demographic context*
(Source: Church of England Research & Statistics Unit)
The three parishes have a similar population in the sense that they are predominantly white British (98+%) and were recorded as 60+% Christian, with the majority of those not registering as Christian as being of no religion. The population of the Dover District is split 20% urban to 80% rural (Office of National Statistics), and we definitely fit into the rural sector. The Church of England's data for each parish can be found in the Appendix, and whilst generally considered not a deprived area, there are particular rural-specific economic and housing issues affecting the Benefice.

When we look at our age demographics (see Appendix), we can see that St Margaret's has the largest proportion of older people, and people do tend to move here to retire – we are a lovely place to live! Our older folk are, however, some of the most vibrant and engaging people you will ever have the pleasure to meet. With St Margaret's being a relatively large village, there remains a significant number of families, particularly attracted by the primary school.



b) As a whole

- *So, what is it like to live here?*

With its stunning coastal landscape, rolling farmland and world recognised heritage, we are truly living in one of the jewels in England's crown. The villages and hamlets in our Benefice have their own personalities and a wealth of beautiful architecture from medieval to modern. St Margaret's, the main centre of population, has a fantastic Village Shop, Post Office, Library, pub and café, run by a brilliant bunch of community-minded people. East Langdon Post Office operates from their busy Village Hall. If you're into your sport, both St Margaret's and The Langdons have cricket clubs, and thriving youth development of the sport at St Margaret's. At the same location in St Margaret's you will find the tennis courts and children's play area, along with a football field and fitness centre on the outskirts of the village. St Margaret's has a thriving bowls club with a great club house that also has two snooker tables and a Social Club. East Langdon has a terrific community play area with equipment for children and adults. Along with fantastic opportunities for walking (and did we mention the beach?!) there's no excuse for being unfit!

St Margaret's has a large village hall, built around 20 years ago, that accommodates a variety of organisations and hosts events all year round. These include St Margaret's Players, a thriving and adventurous amateur dramatics company that draws its talent from across all ages in the Benefice; the Baby & Toddler Group; St Margaret's History Society; St Margaret's & District Gardeners' Association; Memory Café; Senior Citizens' Lunch Club; and numerous other community groups, quiz nights, dances and private events. Find out more from the websites listed in the Appendix. East Langdon Parish Hall, though smaller, is no less bustling with activities. West Langdon has its own tiny hall.

The Benefice is served by two exceptional Parish Councils, who work extremely hard for their communities. The Parish Councils were at the centre of mobilising help for local people in the Covid-19 pandemic. Their websites are a great source of information on all services and facilities in our area. Again, you can find them in the Appendix.

- *Transport & Communications*

Situated at the far south east of England, we are at the end of the A2 and can easily access the M20, being at the M25/Dartford Crossing within the hour. The Benefice lies on the A258, the main route from Dover to Deal, and is served by the High Speed train and regional trains at Martin Mill Station, and buses to the main towns. We are also served by superfast broadband at St Margaret's and Westcliffe, with East and West Langdon on standard broadband.

- *Social and leisure opportunities*

If you want to get involved with village life, there are plenty of opportunities to do so. We have well-established Scout and Guiding Groups (which also provide great opportunities for adult volunteers), sports groups, art, exercise, Baby & Toddler groups, drama, history...and more. If the great outdoors is more your thing, St Margaret's Village Green just happens to be the South Foreland Valley – a gorgeous Area of Outstanding Natural Beauty and Site of Special Scientific



Interest, and at 23.5 hectares is the largest village green in the country. You could walk it every day and still see something new, or you could join the band of volunteers who help to maintain it. Beyond that, National Trust land takes you right to Dover Docks. Collaboration between the

Parish Council and The National Trust provides many opportunities for volunteering. There are numerous footpaths and rights of way through the countryside, and we have the gem of St Margaret's Bay on our doorstep. As with all rural areas, provision for young people is more limited, but the attractions of Dover, Deal, Canterbury and Folkestone all lie within 20 miles.



c) Historical context

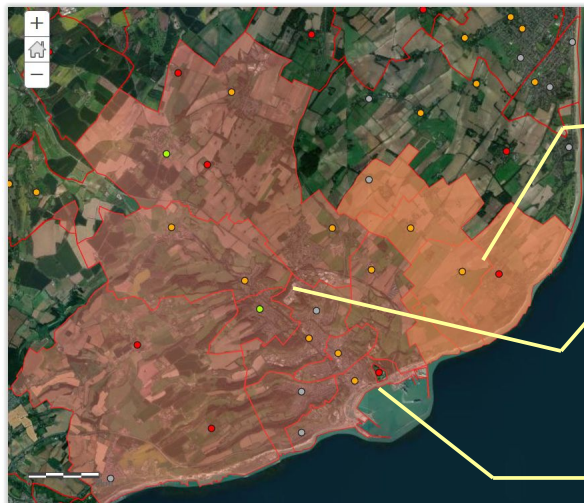
Our Benefice is perched on the White Cliffs of Dover – if you've never seen them in real life, we are sure you know what they look like. This area is soaked in history, from the Bronze Age times, Roman invasion, the establishment of the Christian Church, Norman architecture, Medieval castles, development of telephony, World War I flying squadrons, World War II vital defences, and at all times being the main access point to the continent for both people and trade. With English Heritage Castles at Dover, Walmer and Deal, National Trust sites and private estates open to the public, as well as historic properties all over Kent, you won't be stumped for ideas for a day out.

6. Broader Church Context

a) Where the Benefice is placed within the Deanery / Diocese

We are part of the Dover Deanery which is comprised of three parish groupings – the Western, Dover Town and the Eastern – with us being part of the Eastern Group. Dover Deanery is one of 15 within Canterbury Diocese, the oldest diocese in England founded in

Dover Deanery completely surrounds the port of Dover



St Margaret's Benefice
showing all 4 churches

Dover Deanery
total highlighted area showing parish boundaries

Dover

597 by St Augustine. The Archbishop of Canterbury delegates most of his diocesan functions to the Bishop of Dover, the Right Reverend Rose Hudson Wilkin.

b) Deanery structure and collaborative projects

The Deanery churches are part of an active Christians Together in Dover (CTiD) group, who encompass Christians from across the breadth of traditions and seek to offer witness and to fulfill our Lord's teaching in Matthew 25 v 40 - "for as much as you did unto the least". Their network of collaborations run Dover Foodbank, Christians Against Poverty, Sunrise Café, Street Pastors, Winter Night Shelter, Dover Beehive Project, Port Chaplaincy and Dover Outreach Centre (dedicated to moving people off the streets into housing and employment).

c) Deanery priorities and how St Margaret's Benefice fits in

The Deanery has been focusing on "Changed Lives → Changing Lives", considering how knowing Christ is changing your life now, and how we can better support each other to encourage seven-day-a-week discipleship. We have representation on the Deanery teams and Synod.

d) Outline of current Benefice ministry team

After being served historically by a full-time vicar, then since 2010 by 0.2FTE vicars, all based at the St Margaret's Vicarage, it is clear that a middle ground of 0.5FTE is now needed to effectively serve



our evolving communities. We have a solid leadership team of CWs, Readers, ALMs and retired clergy, and dedicated folk ministering with children and providing pastoral care. Supported by our Benefice Administrator, Benefice Focus Group and Safeguarding Team, and talented people on our PCC's, our administration is well run and co-ordinated across the churches.

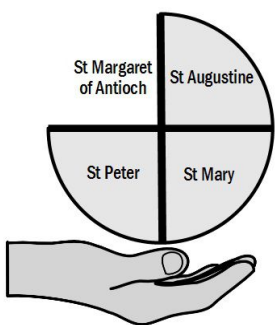
e) Particular areas of interest of the Benefice

The Benefice Focus Group is our main portal for developing ideas and strategy across our four churches. Outreach and expanding community relationships are key to sustaining a relevant Christian presence in today's society. We see partnering that with inspiring, welcoming and varied worship as the way to encourage our churches to grow and thrive. With ambition to open our buildings for more community events, with ongoing support for existing outreach such as the Memory Café (which supports those living with dementia and their carers), St Margaret's

churchyard Green Gang team and East Langdon Community Allotments, we are confident we have a bright future.



7. About the Parishes



St Margaret of Antioch, St Margaret's-at-Cliffe

Our Church

St Margaret of Antioch is a Grade I listed fine example of Early Norman architecture, on Saxon foundations, with decorative carvings inside and out. Since 2011, much work has been done to stabilise and conserve vulnerable stonework, repair clerestory windows and guttering. Major works completed 2023 include a



new tower roof, repointing, and restoration of the clock. With a small kitchen and toilet, we have basic facilities to allow refreshments to be served. The church has level access from the village car park, an induction loop and good sound system, to ensure we are accessible to everyone. We have a Churchyard Green Gang of volunteers who maintain our beautiful surroundings, which sits in one of the village's conservation areas.

A dedicated PCC meets six times a year including the APCM, and has always been a solid support to the Ministry Team, with their great depth of knowledge and experience. Assistance at all services is provided by a wide team from the congregation.

Our Worship

St Margaret's worships in a variety of styles to reflect the tastes and demographic of the congregation. Sunday Communion is CW(10am), with a non-communion Family Service in the 3rd Sunday, along with hosting the Four Churches joint service in turn. Our Director Of Music has encouraged and developed our choir, that enjoys singing traditional and modern hymns and more challenging anthems. We hold a Saturday Service, 'Little Dragons', on the first Saturday of the month, which is an informal session for young people (generally under 12 years) and their parents/carers to come and enjoy time in church, with stories and craft based on the liturgical calendar. We also hold children's craft mornings for the major festivals. Our challenge is to make our Sunday worship as natural a place for our young people and families to feel part of, as our Saturday Services. The Saturday Service has been a natural vehicle for outreach opportunities, with Big Parish Picnics, Sleep-Outs and Teddy Bear Parachute jumps from the church tower just some of our activities. We have also introduced a Saturday Social drop-in coffee morning following on from the Saturday Services since September 2023.

We have two Bible study groups and have held Lenten Reflection groups and occasional quiet days, to encourage individual spiritual growth. Our thriving Brass & Flower Guild ensure our church is beautiful every week and especially for festivals. Financially independent from the PCC, they buy and care for the linen and frontals and all flowers, and hold a magnificent biennial Christmas Tree & Crib festival. We have re-established The Friends of St Margaret's fundraising group after it was moth-balled pre-Covid, and at the same time are developing a wider strategy to bring us back to financial sustainability after costly necessary capital projects. We are also anticipating a substantial payment from EE in 2025 following the termination of a telcomms contract and compensation for repairs.

Our Community

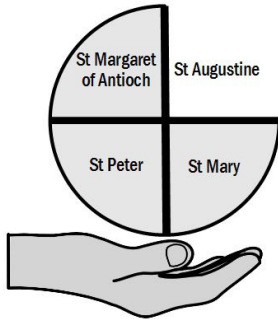
Our three parishes remain connected via our Benefice website, Benefice Facebook account and Parish News, a monthly magazine produced by St Margaret's and delivered to over 600 households by a team of around 40 volunteers. All act as effective vehicles for advertising church services, news, events, and wider community activities. The magazine is also a reliable income source for St Margaret's parish.

We are a lively, active and extremely supportive church that wants to build on our community connections and enrich our village life with God-filled mission and ministry.



THE PARISH OF THE LANGDONS

Its two churches of St Augustine's and St Mary's lie to the north of the A258 in the administrative parish of Langdon which comprises East and West Langdon, Martin and Martin Mill. The total population of these rural communities is under 600 with the hamlet of West Langdon the smallest with around 20 households. Both East and West Langdon have village halls and village greens all of which are used for community events. The church community is highly supportive of both churches, with Langdon Parish Council a generous in financial support for the maintenance of both open churchyards.



St Augustine's Church, East Langdon **Church History**

The oldest of the four churches in the benefice, the grade 2* listed church of St Augustine's dates back to at least the Norman period but underwent substantial restoration in 1892. The church is in good repair. In the last fifteen years a considerable amount of work and fund raising has been undertaken resulting in redecoration of the interior, the installation of a composting toilet and, in 2012 the Victorian stained glass windows were cleaned and the surrounding stonework made good.

Church & Churchyard

The church offers a varied pattern of worship; family service, BCP and CW Eucharist, Service of the Word and a full range of festival celebrations. Services are held on three Sundays in the month. The PCC is open to exploring a pattern that could better serve the community. There have been two small new housing developments in recent years that have attracted younger families and led to a change in the age profile of the community but this is not reflected in the church congregation at present. The church is equipped with a good sound system, pipe and electronic organ and four bells. We enjoy our hymn singing and would love to have our bells rung regularly if only we had some campanologists!



The PCC is quorate and meets four times a year including the APCM. The church is financially viable, meets its obligatory payments and gives to local charities. The churchyard is open and a place of beauty and tranquillity especially in the Spring when it is adorned with flowering trees and a mass of daffodils.



Outreach & Spiritual Growth

The church was once at the heart of a large farming community and continues to be an important feature in the conservation area around the village green. Its proximity to the green has led to a number of well attended and popular outreach opportunities including pet services, Carols on the Green around the Christmas tree and a Remembrance Day service.

The PCC enjoys a good working relationship with the pro-active parish council that is beneficial to both parties in a small rural community. The joint commissioning and financing of the war memorial to mark 100 years since the end of WW1 is a good example of the cooperation that exists.



Our work in the community extends to the parish allotments that are owned and maintained by the church with additional financial support from the parish council. The ten allotments and small community orchard are a welcome and popular asset for our residents as is reflected in the current waiting list for plots!



East Langdon has a primary school with around 85 children on roll. We are pleased to welcome them into the church together with their parents for their Christmas, Easter and end of year services when the PCC presents a bible to each school leaver. The head teacher is pleased for the church to be involved in the services and there are opportunities for this involvement to be extended into the daily life of the school itself.

The Benefice

We play an active part in the work of the benefice supporting the other churches in joint church services, being pro-active in the Benefice Focus Group and undertaking administrative responsibilities on behalf of all the church communities.

Fund Raising

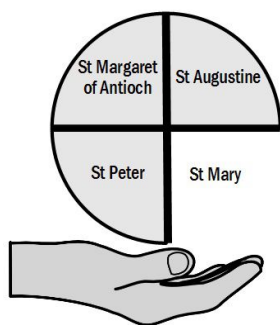
We organise annual fund raising events during the year and are always careful not to be in competition with other community assets such as the village hall and playing field. St Augustine's has a reputation for its hospitality and events are welcomed and well supported. The acoustics of our small church are ideal for classical music concerts whereas other events such as garden parties and harvest suppers have been held in private gardens or the village hall. Advertising events is a challenge as there are no local shops. We aim to keep the community informed via the quarterly parish newsletter and we are now exploring the use of social media to establish a stronger presence.



Going Forward

We may be small in number but we are strong in spirit and, with God's help and the right person walking alongside us, we believe we can build on our outreach work and further the spiritual growth of our community. Are you that person? Could you support us by:

- Being open to explore change
- Having a visible presence in our community
- Encouraging the PCC without the burden of administration
- Developing links with the local school?



St Mary the Virgin, West Langdon **Our Church**

The small country church of St Mary's was originally run and cared for by the priests from Langdon Abbey. The original medieval church fell into ruin and was rebuilt in 1869. It was rebuilt again in 1908 after a serious fire, when a porch was added to the west end and the



stained glass window, pulpit, lectern and pews were installed. The church and churchyard are both in good order. It is a Festival Church and makes the most of its designated services. The churchyard is open. St Mary's runs in close co-operation with the other churches in the benefice, and is the second parish church in The Parish of The Langdons.



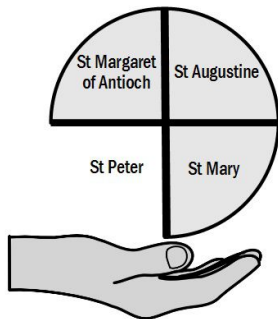
Our Community

The hamlet of West Langdon comprises just over twenty dwellings many of which used to be farm cottages for the Abbey but are now privately owned. The residents of the hamlets of Napchester and Maydensole have traditionally attended St Mary's although these are in the parish of Sutton. Many of the households subscribe to the Parish magazine.



Going Forward in the Langdons

We hope that any future incumbent would help us keep the church alive and maintain a Christian presence in the community.



St Peter's Church, Westcliffe – a church with rich historical associations

Our history

The church of St Peter's lies about a mile south of the village of St Margaret's, on the branch road from St Margaret's to Dover.



A church has been in existence here at Westcliffe since Saxon times. However, the Grade 2 listed building as it now stands was erected in the early parts of the 13th century. Documents show that Queen Eleanor of Castile (wife to Edward I) purchased Westcliffe Manor with the advowson of the church, which was attached to the manor in 1284. The registers of baptisms date from around 1576 and the burials from around 1579. The churchyard contains a centuries old yew tree and in the south east corner amongst the numerous tombstones a small round headed stone with a cross can be found which experts have dated from the 14th century. The civic cemetery is located to the north of the church.

Our Worship

Whilst the hamlet is small, the congregation comes from the wider community, and off-road parking helps facilitate this. Services of BCP communion are held on the first and third Sunday. In addition it takes its turn to host the 4 Churches Benefice service, Easter, Harvest Festival and Christmas celebrations as well as a Carols by Candlelight service with mulled wine and mince pies!

St Peter's popularity as a venue for weddings and baptisms has been curtailed by the withdrawal from commercial use of the manor house opposite, to which it had historical connections. It does continue to hold funerals and the churchyard remains open for ashes interments.





Our Community

Fund-raising events are held throughout the year, most notably the two day Art Exhibition which also acts as great socialising opportunity. St Peter's is also open to all as a Gift day on the Saturday before Harvest Festival, when it looks particularly beautiful.

In 1979 the 'Friends of St. Peter's' was formed by the Rev Stephen Easter which remains strong and has given good support to the church. This has been invaluable in enabling the PCC to keep up to date with repairs and maintenance. The PCC is actively investigating the installation of toilet and associated facilities to enable broader use of the building in the future.

The PCC is well organised, usually meeting 5 times a year including the APCM, and its finances are in good order. There is close cooperation with the other churches in the Benefice and we regularly support local charities.

We hope to continue to open the church for events other than services in order to welcome people in and to help to keep the church 'alive' in the community.



APPENDIX

1. Overview of finances

St Margaret's Benefice Financial Profile

As four parishes, we run independent accounts, with our own unrestricted and restricted funds to use for the benefit of our churches. We have a spirit of collaboration and mutual support and agreed our own Benefice split of Parish Share which we feel better reflects our situation. We recognise that this mutual support is essential in order to work effectively as an integrated Benefice, and in the Christian spirit of supporting others when needs arise.

BENEFICE FINANCE		St Marg's at Cliffe £	Westcliffe £	East Langdon £	West Langdon £	BENEFICE TOTAL £
Income						
2023	as at Nov	£53,102	£8,400	£8,750	£1,522	£71,774
2024	projected	£42,000	£8,650	£9,800	£1,130	£61,580
2025	projected	£42,000	£8,900	£9,300	£310	£60,510
2026	projected	£40,000	£9,150	£10,100	£310	£59,560
Parish Share (2023)		33620	2532	4649	707	£41,508
Expenditure (inc projected Parish Share)						
2023	as at Nov	£55,038	£7,300	£9,900	£1,788	£74,026
2024	projected	£72,000	£7,550	£10,550	£2,016	£92,116
2025	projected	£75,300	£7,800	£10,700	£2,141	£95,941
2026	projected	£80,000	£8,050	£11,575	£2,236	£101,861
Reserves						
2023	actual	£75,037	£99,000	£85,000	£8,797	£267,834
<i>(inc restricted funds)</i>		all restricted				

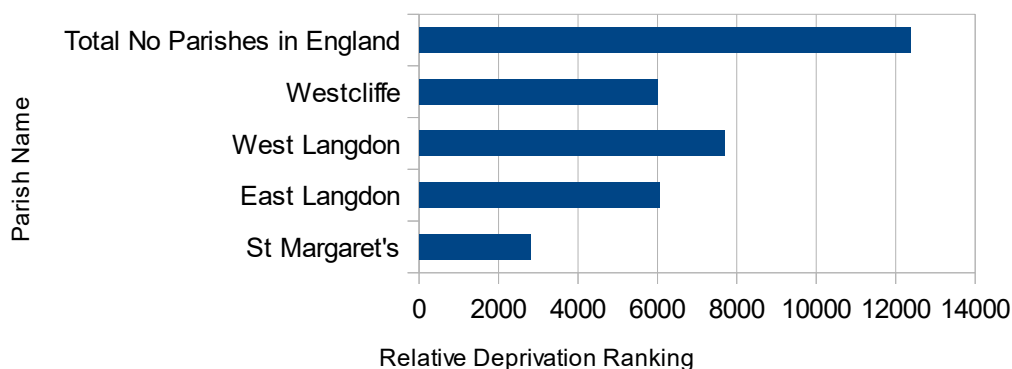
St Margaret's additional expenditure 2023 for costs incurred for 18 months of extensive building works exceeded £250,000, which used up all investments and available reserves. The two smaller parishes met 100% of Parish Share 2024; St Margaret's expects to break even for management of day-to-day church affairs but with no immediate ability to pay Parish Share.

2. Socio-economic & Demographic Context

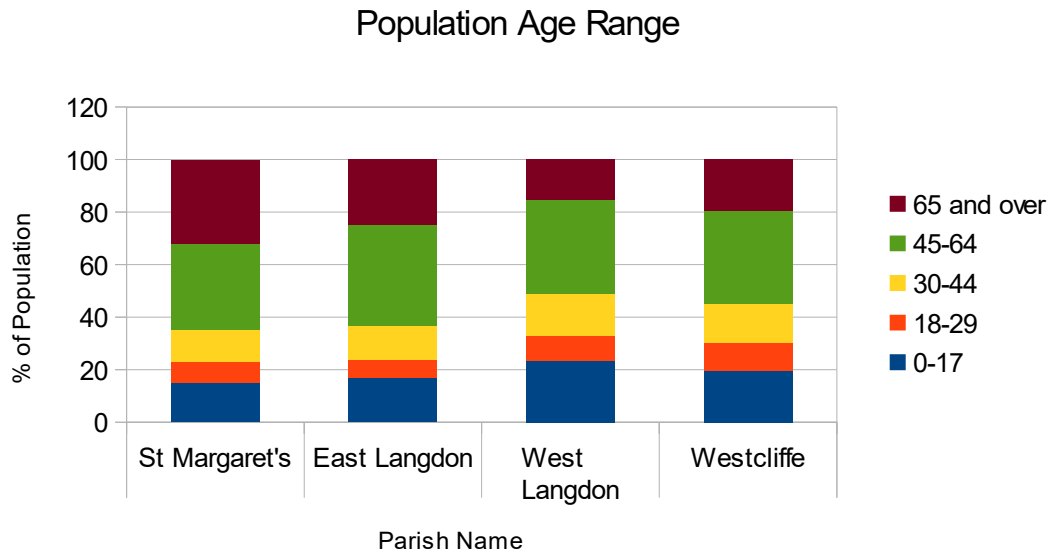
a) *The three Parishes of St Margaret's compared with national statistics*

Index of Multiple Deprivation Parish Ranking

0 (least) to 12,382 (most)



b) Population Age Range of the Four Parishes



3. Current Pattern of Sunday Services Across the Benefice

PARISH				
	St Margaret's	St Augustine's	St Peter's	St Mary's
1st	10am – Communion CW	9.30am – Family Service	8am – Communion BCP	Festival Church 6 services per year
2nd	10am – Communion CW	9.30am – Communion BCP		
3rd	10am – Family Service		8am – Communion BCP	
4th	10am – Communion CW	9.30am – Communion CW		
5th	10am – 4 Churches Service rotates around the Benefice			

4. Population & Electoral Roll Figures

PLACE	2018 PARISH CENSUS	HOUSEHOLDS	ELECTORAL ROLL 2022
St Margaret's	2488	1179	86
East Langdon	499	225	16
West Langdon	43	19	3
Westcliffe	31	15	14

[Source: Church of England - Church Commissioners]

5. Websites to whet your appetite

- St Margaret's Benefice - www.stmargaretsbenefice.org.uk
- St Margaret's & Westcliffe Parish Council - www.stmargaretspc.co.uk
- East & West Langdon Parish Council - www.langdonpc.kentparishes.gov.uk
- St Margaret's Village Hall - www.stmargaretshall.com
- St Margaret's History Society - www.stmargaretshistory.org.uk
- St Margaret's Players - www.stmargaretsplayers.com
- St Margaret's & District Gardeners' Association - find them on Facebook

